



BerryTunes

Version 2.5

Audio Player, Streaming Radio & Podcasts
for BlackBerry™ Smartphones

Copyright©2008

VirtualViews.com

SYSTEM REQUIREMENTS

Requirements for BlackBerry

- * BlackBerry 8100, 8300, 8800, or 9000 series with OS 4.2.1+
- * BlackBerry 8830 requires OS 4.2.2.196 or greater
- * BlackBerry 8130 requires OS 4.3.0.81 or greater
- * Unlimited Data Plan Recommended for Radio & Podcasts
- * High Speed Data Connection Recommended for Podcasts

Requirements for MP3 File Transfer (Optional)

- * Windows Vista/XP/2K with Microsoft .NET Framework 1.1+
- * BlackBerry Desktop Software installed
- * SD card or space on internal memory for MP3 files
- * MP3 files for transferring to your BlackBerry

*** DISCLAIMER ***

Please download the trial version of this software to ensure compatibility with your device and any other software or accessories you may be using. If your BlackBerry is password protected you must enter your password correctly when transferring files via USB. If your password is not entered correctly within 10 attempts you risk losing all of the data on the device. This is a security measure implemented by RIM.

New Features in 2.5

- * Streaming Audio Podcasts
- * New File Navigation for Audio Player
- * Additional Audio Formats (MP3, AAC, M4A, MIDI, WMA)
- * Stereo Bluetooth Support
- * Add Preset Stations and Podcasts to Favorites
- * Improved MP3 Transfer software
- * Compatible with BlackBerry OS 4.5

Overview

Turn your BlackBerry into a portable sound machine with BerryTunes!

Listen to audio files, live Internet radio and streaming podcasts right from your BlackBerry!

You can output the music through the speaker, a wired headset, a Bluetooth earpiece or even a stereo Bluetooth headset.

BerryTunes includes MP3 file transfer software for Windows to transfer your MP3 files via the USB cable. The MP3 Browser for Windows allows you to easily select the MP3 files you want to send to your BlackBerry. You can even preview your songs in the MP3 Browser before transferring them to your BlackBerry.

BerryTunes can store your songs on a SD memory card (recommended) or use the internal memory of the BlackBerry.

Features:

- * NEW! Listen to Streaming Podcasts!
- * Listen to Live Internet Radio Stations
- * Store files on SD card or internal memory
- * Transfer via USB cable
- * Preview music before sending
- * Easy to use MP3 Browser for Windows
- * Convert files to optimal format
- * Choose Encoding (128k, 64K, 32K or none)
- * Faster file transfer via USB
- * Supports MP3, AAC, M4A, WAV, AMR, MID, WMA
- * Fast Forward / Rewind using the trackball
- * Time Counter displayed on screen
- * Player pauses on incoming phone call

Note: Not all devices support stereo Bluetooth

Registration: Please be sure to correctly enter your BlackBerry PIN when purchasing this product. The PIN is an 8 digit code that can be found by choosing Options>Status or Tools>Settings>Status from the BlackBerry Home Screen. The characters "B, 8" and "O, D, 0" look very similar so please double check your PIN. If you do not enter your PIN correctly your registration code will not work!

BlackBerry Installation

Over the Air (OTA)

Email this link to your BlackBerry or type it in the BlackBerry Browser:

<http://www.berrytunes.com/ota/BerryTunes2.jad>

USB Install:

Connect the USB cable to your BlackBerry

Double click the USBInstall.exe file

(BlackBerry USB driver required)

Desktop Install:

Use the Application Loader in the BlackBerry Desktop Software.

Add the BerryTunes2.alx file and follow the wizard.

SDCard Install:

Copy the BerryTunes2 .jad and cod file to your BlackBerry SD Card.

Open the BlackBerry Media Application, choose "Explore" from the menu to find the .jad file and open it to install BerryTunes.

NOTE: Please unzip the BerryTunes zip file before installation

Uninstall from BlackBerry

Use the BlackBerry desktop software or delete on device to remove BerryTunes.

To uninstall directly from the BlackBerry go to the following screen:

Options > Advanced Options > Applications

Select BerryTunes, and then choose "Delete" from the menu.

If you installed with the USB Installer click on the USBInstaller.exe and choose the Remove Option.

Registration

The trial version lasts for 7 days. After that you will need to purchase a registration code to continue using the program. After you have received your registration code, choose the "Register" option from the main menu, enter your registration code and click the "Register" button.

You have 10 attempts to enter your registration code. If you don't enter your code correctly in 10 tries you will have to wait 6 hours before you can try again.

If you find that your registration code doesn't work, please contact the website where you purchased the program and provide them your order number and PIN. To locate the PIN, go to the BlackBerry home screen and select Options>Status or Tools>Settings>Status (depending on your model).

Application Permissions

You may need to adjust the Application Permissions for BerryTunes.

Go to Options > Security Options > Application Permissions

Highlight BerryTunes and choose "Edit Permissions" from the menu.

Expand the Interactions tree and change the "Media Access" to Allow.

Firewall

On certain devices you may need to disable the firewall to make a network connection.

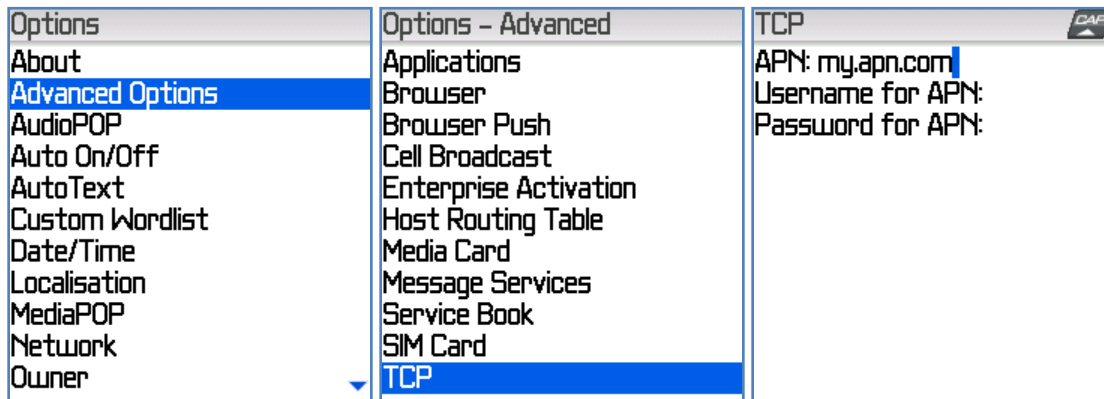
To disable the firewall, follow this procedure:

Options > Security Options > Firewall

Change the Status to “Disabled”

If you are using a company BlackBerry and can't disable the firewall, you may need to ask your IT administrator to adjust your IT policy for you.

DIRECT TCP

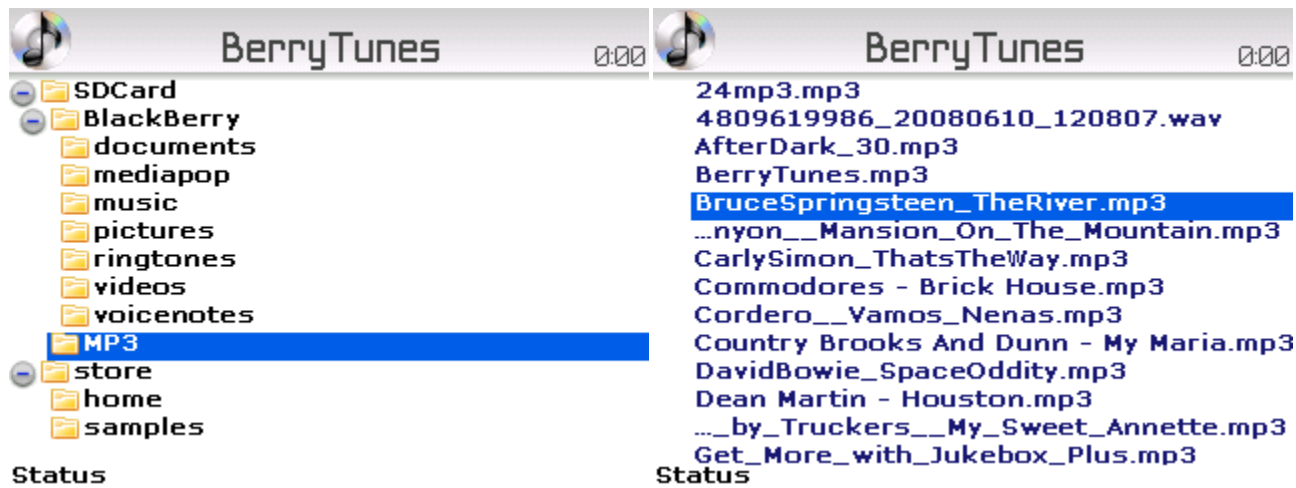


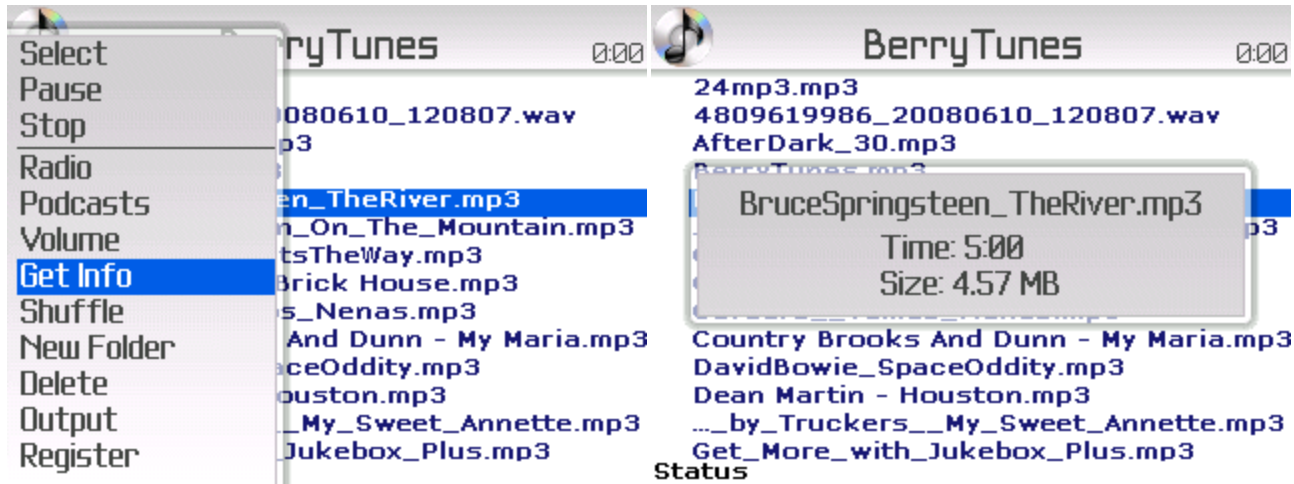
If you are using a GSM/GPRS/EDGE network you will need to enter your APN to use the Radio or Podcasts.

From the BlackBerry home screen go to Options > Advanced Options > TCP and enter your APN settings.

If you don't know your APN contact your wireless company or see the list in our FAQ.

BerryTunes Audio Player





BerryTunes will display the file system of your BlackBerry on the main screen in a tree structure starting with the root of the file system. Use the trackball to highlight the folder you want to open and choose "Select" from the menu to open the folder and display the supported audio files and any sub folders.

BerryTunes Audio Player works best if you arrange your files into subfolders. For example, each album of songs should have its own folder.

You will be able to play the audio files your BlackBerry supports. Most models will be able to play MP3, AAC, M4A, AMR, WAV, MID and certain WMA files.

To refresh a folder, highlight it and choose "Select" from the menu. This will reload the folder and close any subfolders that were open. You can also expand or contract a folder without refreshing it by choosing the appropriate option from the menu.

To play a song, use the trackball to select the audio file you want to play and choose "Select" from the menu. You can also use the spacebar on the BlackBerry to play the selected file.

To fast forward or rewind a song move the trackball left or right.

The songs will play one after the other until the end of the folder is reached.

Use the "Volume" menu option to adjust the speaker volume or use the volume keys on the side of the BlackBerry. To close the Volume dialog press the Escape key.

Use the "Output" menu option to select the desired audio output. You can choose from Speaker, Handset, Bluetooth Audio or Stereo Bluetooth. To use a wired headset just plug it in; this will override all output settings. Bluetooth can be problematic on early versions of the BlackBerry 4.2 software but appears to have been fixed in newer versions. Note that some versions of the BlackBerry OS do not support stereo Bluetooth. To use Bluetooth pair your devices as you normally would with the BlackBerry and choose the correct Bluetooth option in BerryTunes.

The "Shuffle" menu option will randomize all of the songs in a folder. This can be used to give your songs a fresh sound if you are tired of the order they are played in. This order will not be saved and the files will be sorted alphabetically the next time you start BerryTunes.

The "New Folder" menu option will create a new folder in the folder you have currently highlighted.

The "Delete" menu option will delete a file or a folder and all its files and folders - be careful!

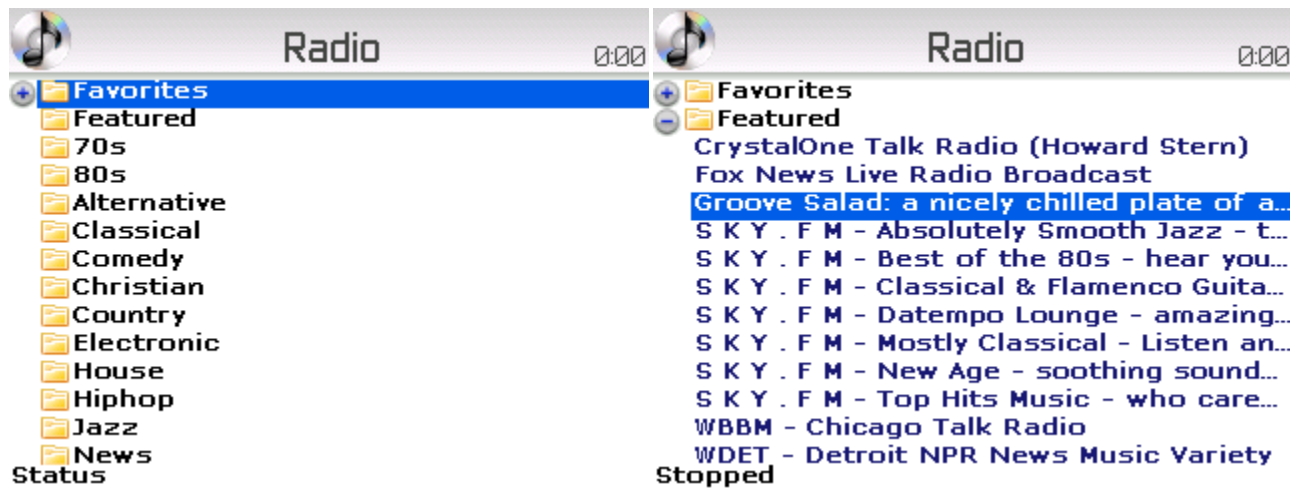
The "Get Info" menu option will display basic information about the files such as the name, time and size of the file.

Use the "Register" menu option to register BerryTunes. See the previous section for additional details.

Use the "Delete" menu option to delete a single song. See the section below for additional options.

Use the "Update" menu option to update BerryTunes over the wireless network (OTA). This will launch the BlackBerry browser and display the latest version available for download.

Internet Radio



Internet Radio provides a variety of stations to listen to streaming music on your BlackBerry. Choose the category you wish to listen to and choose "Select" to load the available stations. You can then choose the station you want to listen to. It may take a little while before the stream begins to play. If one station doesn't work, please try another. We cannot guarantee the availability of any one station.

Make sure you set the APN in the BlackBerry TCP settings if you are using EDGE to avoid an open tunnel error.

To add one of the preset stations to your favorites, highlight the station and choose "Add Favorite" from the menu.

To add your own station, highlight "Favorites" and select "Add Station" from the menu. You will need to enter the name of the station and the URL to the stream or .pls file. We recommend 32Kb streams if you are using

your carriers mobile network. The stream will start faster if you enter the direct URL to the stream instead of the .pls file but either should work. Typing in the stations website address will NOT work.

To edit or delete a station, highlight the station and choose "Edit Station" or "Del Station" from the menu.

We recommend low bit rate MP3 or AAC streams such as 24Kbps or 32Kbps. Example:

Name: WUMB

URL: http://216.235.81.102:15440/

Low bit rate streams designed for Winamp will work best.

Windows Media Streams (.wmv files) or URLs that starts with mms:// are NOT supported.

To copy and paste a station URL from an email you can use keyboard shortcuts:

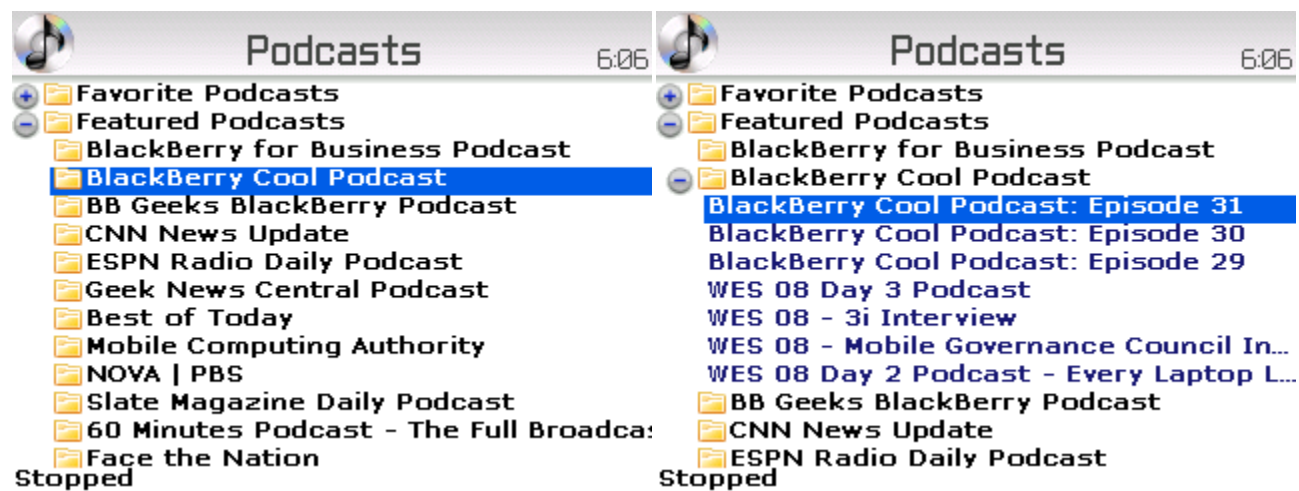
1. Press the Shift key and use the Trackball to select the text.
2. Press the Alt key then click the Trackball to copy the text.
3. To paste, press the Shift key and then click the Trackball.

Unfortunately, we are not able to provide individual assistance adding custom stations. Please ask the stream provider for the URL. We recommend you get the station you want working with Winamp or iTunes and then copy the URL to your BlackBerry.

Devices with built in WiFi can connect to the stream by selecting "WiFi Connection" from the "Network" menu option. If your device does not have Wifi, you will receive an error such as "Max Tunnel Timeout".

NOTE: Internet Radio may not work with all carriers - some carriers may limit the amount of data you can receive at one time or they may block this feature all together. Incoming voice calls will likely go to voice mail on GSM based devices when using the Internet Radio Feature.

Podcasts



BerryTunes contains a variety of popular audio Podcasts that you can listen to. We recommend using WiFi or a high speed data network such as CDMA or HSPDA 3G connection. You can use EDGE but it may not be fast enough to play certain podcasts. Make sure you set the APN if you are using EDGE or choose the WiFi network option if your device supports it.

Podcasts are organized alphabetically by category. Highlight the category you want to view and choose "Select" from the menu to load the available feeds for each category from the network. Highlight the feed you want and choose "Select" from the menu to load the podcasts and select a podcast. Please be patient; it may take a minute or two to buffer the podcast before it will start playing.

Once you start playing a podcast the text color will turn to red to let you know that you have listened to it previously. The text color of previously heard podcasts will remain red for two weeks.

If you stop a podcast you can resume where you left off if the server supports this feature. To resume a podcast select it again and you will be asked if you want to resume. The podcast should resume a little before the point where you last stopped. If the server does not support this feature the podcast will start from the beginning.

If you are on a high speed network (CDMA, WiFi, HSPDA) and receive a phone call the podcast will stop and you should be able to resume it once you finish your call. If you are using EDGE your call will likely go to voicemail while you are listening to a podcast.

To refresh a podcast feed, highlight it and choose "Select" from the menu to reload it. You can also use the Expand or Collapse menu options without refreshing.

To add one of the preset podcast feeds to your favorites, highlight the feed and choose "Add Favorite" from the menu. You cannot add an individual podcast to your favorites; you must add the feed.

To add your own podcast feed highlight the "Favorite Podcasts" folder in the Podcast Screen and choose "Add Podcast" from the menu. Type in the name of the feed and the URL of the Feed. The feed URL should start with "http://". Only MP3 audio podcasts are supported; video is not currently supported. To edit or delete a feed, highlight the feed and choose "Edit Podcast" or "Del Podcast" from the menu.

Example:

Name: CNN

URL: <http://rss.cnn.com/services/podcasting/newscast/rss.xml>

Installing BerryTunes on Windows

NOTE: The previous version of BerryTunes is NOT compatible with this version.

Please uninstall the previous version before proceeding. You must have the Microsoft .NET Framework 1.1 or 2.0 installed in order to use the BerryTunes MP3 Browser. A link to the .NET Framework version 1.1 is included should you need to install it. The .NET Framework is also available via Windows Update.

You must also have the BlackBerry Desktop Software installed as this contains the USB driver necessary to communicate with the BlackBerry. You can download the BlackBerry Desktop Software from your carrier or install it using the CD that came with your BlackBerry.

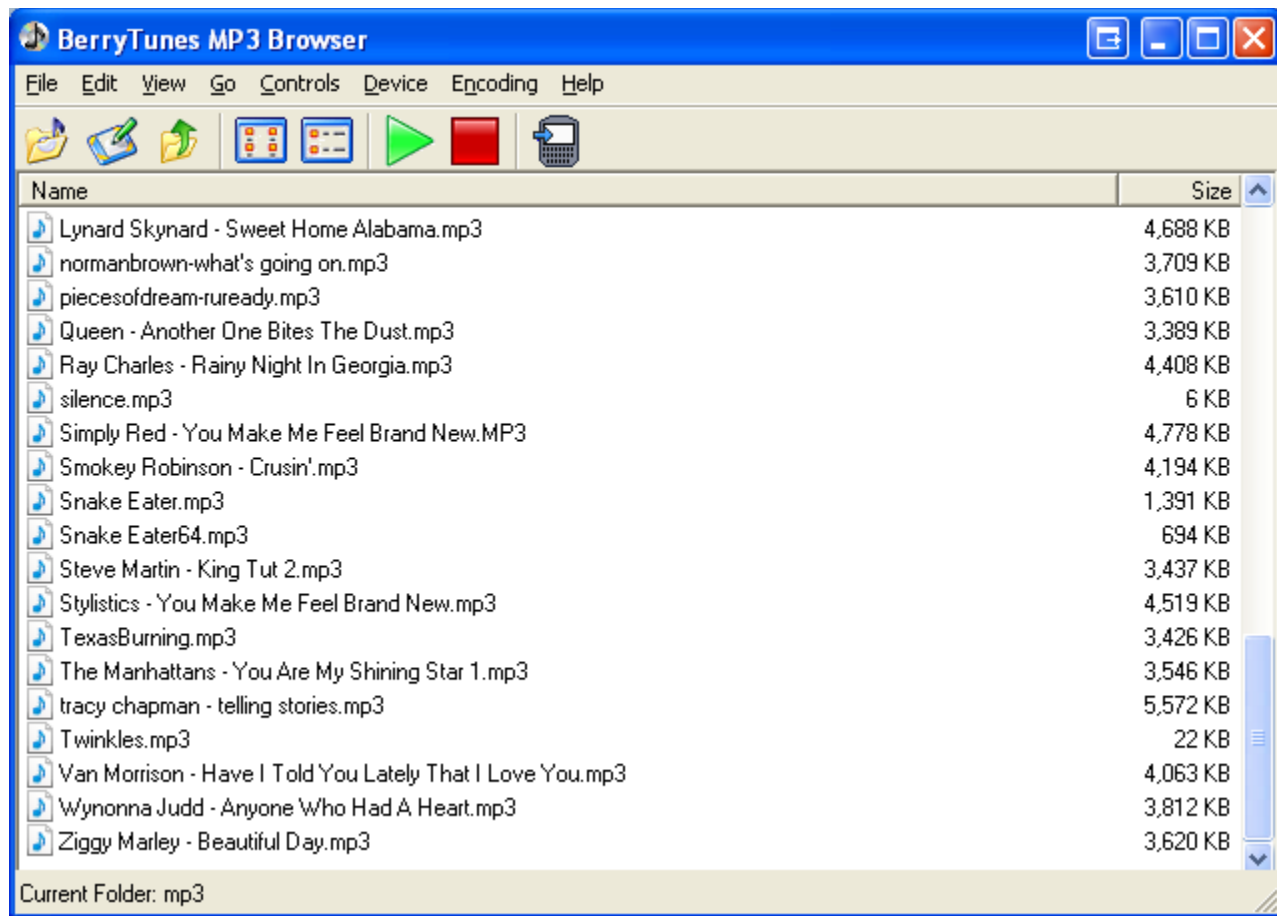
To install BerryTunes MP3 Browser double click on the file "BerryTunesSetup.msi". Make sure that you have unzipped the zip file to a folder before trying to install the above setup file. If you are using Windows you can right click on the zip file and select "Extract All..." to unzip it or you can use a 3rd party unzip tool.

Follow the prompts to install the program to the default location. When finished you should see a BerryTunes icon on your desktop and an entry under Program Files that you can access via the Start menu.

Uninstall from Windows

Use the standard Add/Remove Programs icon in the Windows Control Panel

BerryTunes MP3 File Transfer Software for Windows



The MP3 File Browser is similar to the Windows Explorer file viewer. You can view either icons or a list of files and folder by selecting the appropriate option from the "View" menu, or by using the toolbar.

The MP3 File Browser will only display MP3 files, and folders that can be opened. To open a folder double click on it. To go up one level from where you are, click the icon with the yellow folder and green up arrow. The current folder that is open is displayed in the Status bar.

When you first start BerryTunes on Windows, the MP3 File Browser will open to the Windows "My Music" Folder. This folder is located in "My Documents". The full path to this folder is typically something like this:
C:\Documents and Settings\~username~\My Documents\My Music

If for some reason the "My Music" folder does not exist, the browser will open to the desktop.

You can set the default "My Music" folder by selecting the *folder* you want to use and then choose "Set My Music" from the File menu. You can also right click on the folder you want to use and choose "Set My Music" from the context menu.

Previewing MP3 Files

Select the MP3 file you want to listen to with your mouse and use the green "Play" button on the toolbar to start the song. Use the red "Stop" button to stop the sound. You can also right click on an MP3 file and select "Play" or "Stop" from the context menu.

Make sure your speakers and sound card are setup correctly, etc.

The MP3 file will be played out of the default Windows sound device.

Testing the USB Connection

The "Device" menu of the MP3 Browser contains an option that will allow you to test the USB connection between the BlackBerry and Windows. You can use this feature before you transfer files to ensure that everything is working properly. This option also displays your BlackBerry PIN.

The Device menu also allows you to "Reset" the BlackBerry. This is useful to reset the USB connection and also to recover unused space on the BlackBerry. The "Reset" option is the same as pressing ALT-CAP-DEL on the BlackBerry or removing the battery from the BlackBerry.

Mass Storage Mode

In order to transfer files to the BlackBerry with the BerryTunes MP3 Browser you will have to turn off the mass storage mode when the BlackBerry is connected to the computer via USB.

This is normally located on the BlackBerry under "Options > Media Card" or "Options > Advanced Options > Media Card"

Scroll to the Mass Storage Mode and disable this feature or set it to prompt you when connected and choose "No" when it prompts you if you want to enable Mass Storage Mode. You can see the prompt when you plug in the USB cable.

Transferring MP3 Files

First, connect the USB cable to the BlackBerry then start BerryTunes on the BlackBerry and highlight the folder you want to transfer files to in the BerryTunes Audio Player (main screen).

Next, open the BerryTunes MP3 Browser on your Windows computer.

The browser will open to the Windows "My Music" Folder by default.

Select the encoding you want to use or choose "None" to transfer the file as it is. If you don't have much space on your BlackBerry you can compress the files with one of the encoding options.

Using the MP3 File Browser, navigate to a folder and find the MP3 file(s) that you want to transfer to the BlackBerry. Your files must be in MP3 format or they will not show in the browser. If your music files are not in MP3 format you will need to use another program to convert them to MP3 format.

A sample MP3 file called "BerryTunes.mp3" is included with the software that you can use for testing if you don't have any MP3 files on hand.

There are a few ways to transfer files, but they generally have the same result.

To transfer a single file you can either double click it or select it and then choose the "Transfer" icon in the toolbar. You can also right click on a file and choose the "Transfer" option from the context menu.

To transfer multiple files, select the first file you want to transfer by clicking it once with the mouse. Then hold down the Ctrl key and select the individual files you want to transfer. To select a range of files, do the same as above except hold down the Shift key and then click on the last file you want to transfer. All the files in the range will be selected. You can also use the Select All option from the Edit menu (Ctrl-A). With all the files you want selected, click on the "Transfer" button on the toolbar to start the transfer to the BlackBerry.

We recommend you start by transferring one file at a time until you get the hang of it.

If you prefer to use a traditional file dialog you can use the File menu to "Open and Transfer" but you will lose the ability to preview files. You can also drag and drop MP3 files directly on the MP3 Browser to transfer them to the BlackBerry.

Transfer can take a minute or two depending on the size of the file as the files are converted to a format that is compatible with the BlackBerry if you chose one of the encoding options.

Files are stored in the folder you currently have highlighted in the BerryTunes Audio Player.

You can cancel a transfer but do not interrupt the process when a file is saving to the BlackBerry. It's better to wait until the file has finished saving and then delete it if you don't want it.

If your BlackBerry is password protected a dialog will be displayed requiring you to enter your password. You must enter your password within 10 attempts or you risk losing all the data on the Handheld. If you forget your password do not try to guess it; contact your system administrator. You will have to enter your password each time you transfer a file or attempt to make a USB connection. If possible, you may want to disable password protection while transferring files and then turn it back on after you have finished.

Size Limits

There is no size limit for files transferred to the SD card but there is a limit of 2.8 MB for files transferred to internal memory.

Troubleshooting

Problem: You are getting an "Open Tunnel" error.

Solution: Enter your APN per the "Direct TCP" instructions above.

Problem: "Uncaught Exception: pushModalScreen called by a non-event thread."

Solution: Modify Application permissions for BerryTunes and "Reset All Counts" on the Firewall.

Problem: Loss of Connection while streaming

Solution: Make sure you have a strong signal; move to another location if necessary. Turn off any programs you have running in the background such as feed readers, etc. Email ringtones can interrupt the stream; try switching to a quiet profile.

Problem: You can't connect to the BlackBerry via USB

Solution: Make sure that you have BerryTunes open on the BlackBerry. It's not enough to have the program installed; the folder you want to transfer your files to should be highlighted in BerryTunes on the BlackBerry.

Problem: You get an error when trying to convert the MP3 file

Solution: BerryTunes can read most MP3 formatted files except for files encoded in "Free Format". If you have a free formatted MP3, you will need to use another program to convert it to a more conventional format.

Acknowledgments

LAME MP3 Encoder - mp3dev.org

Nuvola Icons - icon-king.com

Software Developer

Virtual Views

Copyright (c) 2008 All rights reserved.

berrytunes@virtualviews.com